

# AsteriskNOW 2.0 Quickstart Guide (beta)

Install a complete Asterisk system with a user-friendly graphical user interface in less than 30 minutes.

Thank you for downloading AsteriskNOW. This Linux distribution has been carefully customized and tested with Asterisk, and installs all of the packages needed for its use. It is the officially recommended development and runtime platform for Asterisk and Digium hardware, including Digium phones. This guide provides a brief overview of installation, configuration, and maintenance of your system. More information is available at <http://wiki.centos.org/>. Please report any bugs at <https://issues.asterisk.org/jira>

## Installation

- Burn the AsteriskNOW DVD image to DVD disc and then boot from the DVD to begin the installation process.
- If you are unfamiliar with burning disc images, the Ubuntu community has a great Burning ISO Howto available at <https://help.ubuntu.com/community/BurningIsoHowto>.
- If you are unfamiliar with booting to DVD, the Ubuntu community has a wonderful Boot From DVD HOWTO available at <https://help.ubuntu.com/community/BootFromCD>.
- After booting from the AsteriskNOW DVD, you will be presented with the following screen and options for an installation with, or without the FreePBX web interface. This QuickStart assumes that the FreePBX web interface has been installed. To do this, selection option 1 and press ENTER:



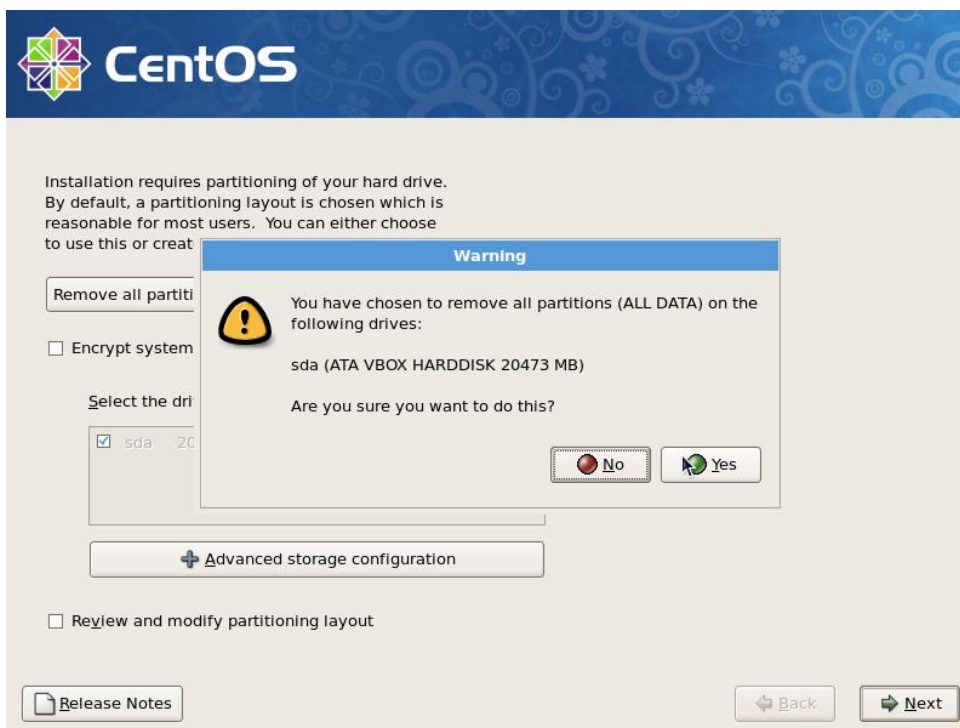
This will begin the automated graphical installation process.

- During the installation, you are first presented with an option for Hard Disk Layout:



NOTE: It is recommended to select "Remove all partitions on selected drives and create default layout" and move to the next screen.

- This will present an additional dialog:



NOTE: This will \*ERASE ALL DATA\* on the system. Anything that is important should first be backed up to a different system.

- Next, you will be directed to set your timezone:



- Choose the location that is nearest to you and move to the next screen.
- Then, you will be prompted to set a root password:



WARNING: The 'root' user is the administrative account for Linux systems. Most system configuration requires 'root' access. If this password is lost, it is impossible to recover. It is recommend that your password contain a mix of lowercase and UPPERCASE letters, numbers, and/or symbols. Or, if you'r into entropy, try a pass phrase.

- Now, sit back, relax, have a cup of coffee and wait while the system is installed. This will take approximately 15-30 minutes. Once installation has completed, you will be prompted to reboot into your installation:



- After the system reboots, you will be presented, during this first boot only, a dialog to configure system services:



- the defaults should suffice, so use the TAB key to scroll to the Exit option and then press the key.

- Once the booting process has completed, you will see this screen:

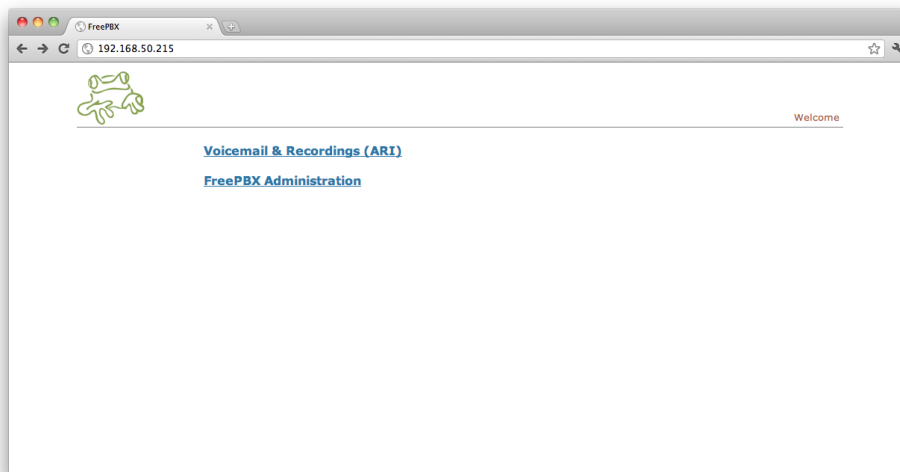
```
AsteriskNOW 2.0.0
To configure AsteriskNOW with FreePBX, point your web browser to http://192.168.
50.215/
localhost login: _
```

Congratulations! You have successfully installed AsteriskNOW. NOTE: Notice the text that says "To configure AsteriskNOW with FreePBX, point your web browser to http://xx.xx.xx.xx/." Write this down, you will need it in the next section.

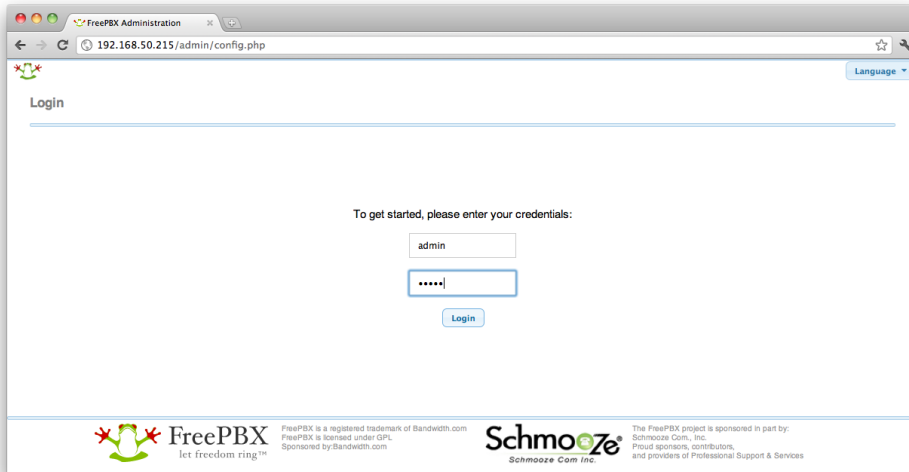
## Configuration

NOTE: Before making any system configuration changes, you must log in as the 'root' user.

- By default, AsteriskNOW will attempt to use DHCP to setup networking. If you would like to change networking settings, you can run the command ``system-config-network``. You can view the current IP address of the system by using ``ifconfig``.
- To configure your system using FreePBX, open a web browser on another PC to the specified address, provided during boot, or by running the 'ifconfig' command and you will be presented with the FreePBX main screen:

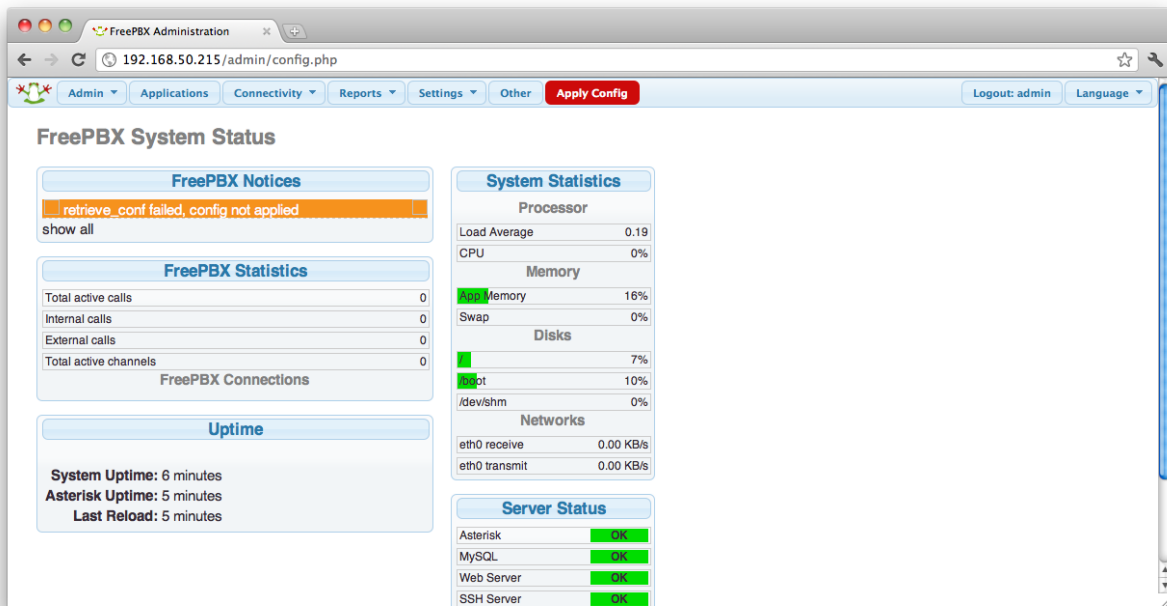


- From here, we want the "FreePBX Administration" link. Click it, and you will see the FreePBX login screen:



INFO: The default username is \*admin\* The default password is \*admin\* NOTE: Though not covered in this guide, changing the default login is \*IMPERATIVE.\* You should not place any servers on the Internet with default login credentials still enabled or in use, otherwise you are inviting disaster.

- Having successfully logged into FreePBX, you will see the FreePBX dashboard:



WARNING: Notice the \*Red\* reload button. It will appear after changes are made to any page. If you see it, it should be clicked, it will affect any changes on the system that FreePBX needs to make. This guide assumes that whenever you see it, you will click it